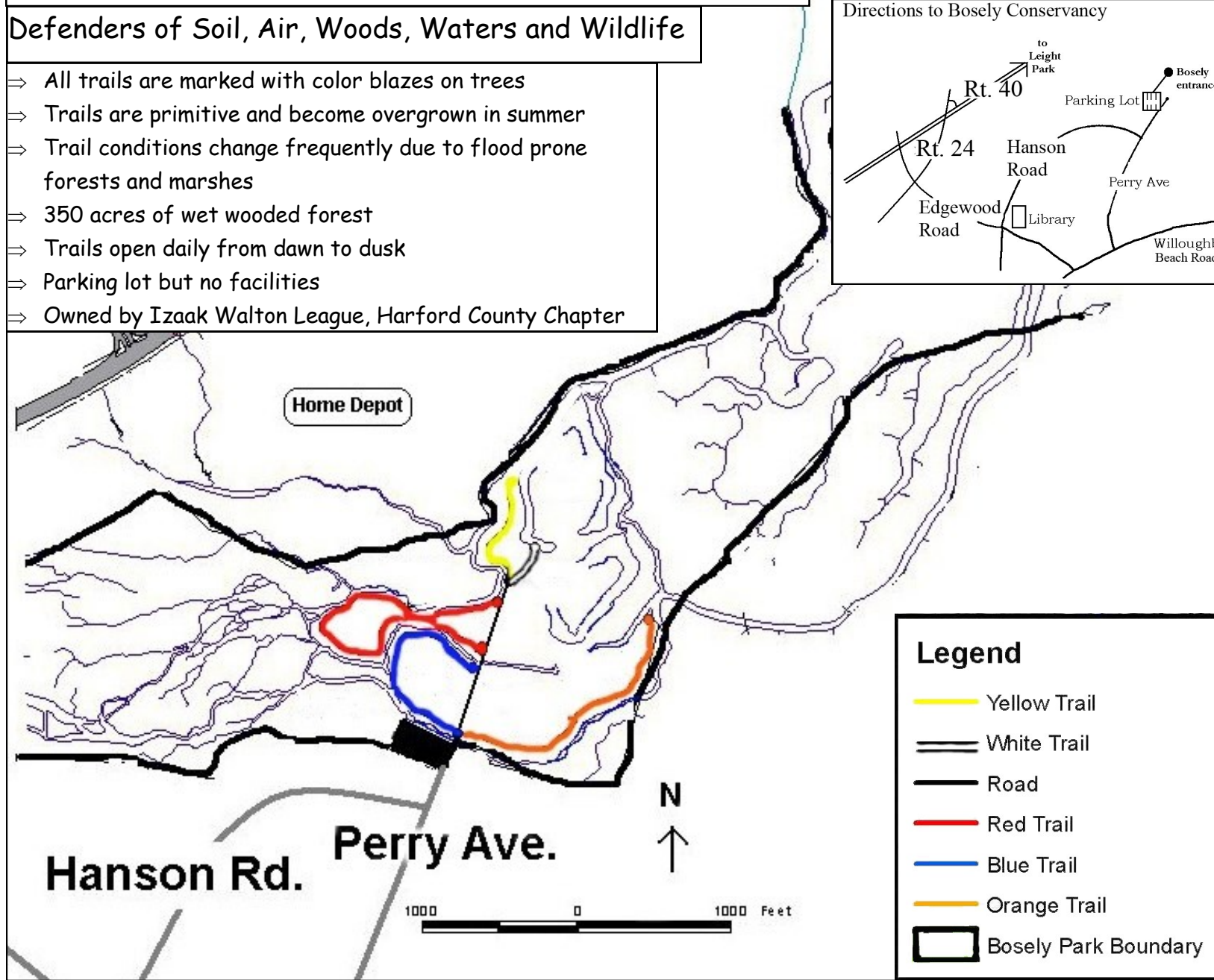
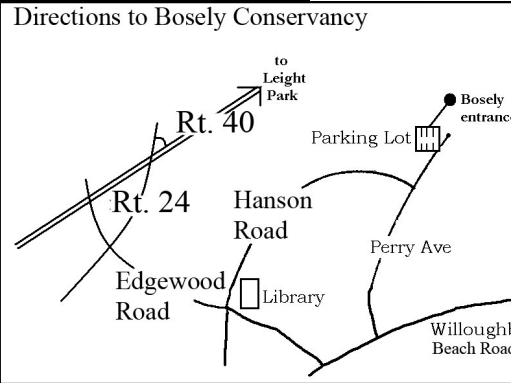


Bosely Conservancy Trail Map

The Izaak Walton League of America, Inc.

Defenders of Soil, Air, Woods, Waters and Wildlife

- ⇒ All trails are marked with color blazes on trees
- ⇒ Trails are primitive and become overgrown in summer
- ⇒ Trail conditions change frequently due to flood prone forests and marshes
- ⇒ 350 acres of wet wooded forest
- ⇒ Trails open daily from dawn to dusk
- ⇒ Parking lot but no facilities
- ⇒ Owned by Izaak Walton League, Harford County Chapter



Legend

- Yellow Trail
- White Trail
- Road
- Red Trail
- Blue Trail
- Orange Trail
- Bosely Park Boundary

TRAIL MAPS

Anita C. Leight Estuary Center
700 Otter Point Road, Abingdon, MD 21009
410-612-1688
www.otterpointcreek.org



Park Rules:

- ◆ No collecting of plants or animals
 - ◆ No bikes, horses, roller blades, or skateboards
 - ◆ Dogs **MUST** be on a leash to protect research sites and ensure visitor safety. Owners are responsible for cleaning up after dogs
 - ◆ Please do not disturb marked research sites
- We are a Research Reserve and appreciate your cooperation.

For more information or directions, contact
Anita C. Leight Estuary Center
410-612-1688 www.otterpointcreek.org
aclec@harfordcountymd.gov



Leight Park Trail Map

- 93 forested acres on Otter Point Creek
- Trails are open down to dusk
- Anita C. Leight Estuary Center open Mon—Sat. 10 a.m.—5 p.m.
Sun 12—5 p.m.

Nature and tree guide books, with activity pack, may be borrowed from the Estuary Center.



LEGEND

- Discovery Trail
- Trail to Pier
- Lavender Trail
- Eagle Trail
- North Corner Trail
- Overlook Trail
- Vista Trail
- Trail to Water

- Discovery Trail:**
- ◆ **YELLOW** color blazes on trees
 - ◆ **Approximately 3/4 mile round trip**
 - ◆ **Set of stairs just before circle loop**

- Vista Trail:**
- ◆ **ORANGE** color blazes on trees
 - ◆ **Approximately 1/10 mile round trip**

- Trail to the Water:**
- ◆ **Steep paved road**
 - ◆ **Approximately 1,000 ft round trip**
 - ◆ **Access to stony beach (low tide)**
 - ◆ **Picnic tables**
 - ◆ **No private vehicles allowed**

- Trail to the Pier:**
- ◆ **BLUE** color blazes on trees
 - ◆ **Approximately 1/2 mile**
 - ◆ **Some steep sections**

- North Corner Trail:**
- ◆ **WHITE** color blazes on trees
 - ◆ **Approximately 1/4 mile round trip**

- Eagle Trail:**
- ◆ **RED** color blazes on trees
 - ◆ **Approximately 1/3 mile round trip**

- Lavender Trail:**
- ◆ **LAVENDER** color blazes on trees
 - ◆ **Approximately 1/2 mile**

Anita C. Leight Estuary Center
700 Otter Point Road
Abingdon, MD 21009

Operated by Harford County Parks and Recreation

The Department of Parks and Recreation encourages participation by people with disabilities. This document is available in alternative format upon request. For disability related accommodations, contact Therapeutic Recreation Specialist at 410-638-4899/voice, (TTY users call Maryland Relay) at least two weeks prior to event.